

PLASTIC DETECTIVES



YOUR CHALLENGE FOR WORLD OCEANS DAY



To find out how much plastic waste is thrown away in one week. Collect and record all the plastic waste thrown away in your home for one week starting on World Oceans Day - Monday 8th June and finishing on Sunday 14th June.



Plastic waste could include drinks bottles, food containers and wrappings, cleaning or washing products, beauty product containers.... (Just make sure you wash all your plastic waste thoroughly!)



1. Starter Video

Time 5 minutes

Watch the Plastic Oceans UK video "What is plastic?" on the Blu Hope website- www.bluhope.org

2. Record

There are lots of ways you could investigate your plastic use. You could separate your plastic by:

- Colour
- Use
- Single-use or reusable

You could calculate how much of each plastic you have collected by:

- Number of items
- Mass/ weight
- Measurement



3. Display

Now you have gathered all the information, you need to think about how to best display your results.

This could be a table or graph (examples shown below)

Colour	Use	Single- use	Reusable

RECORD YOUR RESULTS...

Number of items	Mass g/kg	Length cm/m

RECORD YOUR RESULTS...



4. Photograph

“PICTURES TELL A THOUSAND WORDS”

Take a photograph of the plastic waste you have collected over one week.



FACT

Since the 1950s when the mass production of plastics began, around 8.3 billion metric tonnes of plastics have been produced.

We are now producing over 330 million tonnes of plastic every year, half of which we only use once - we call this single use.

Only about 9% of all plastic ever made has likely been recycled.

FACT

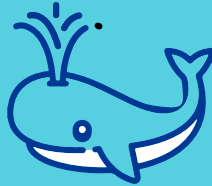
Unfortunately more than 8 million tonnes of plastic get into our oceans every year.

That's the same as one rubbish truck full of plastic being emptied into the ocean every single minute!



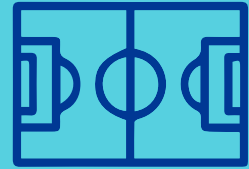
OR

The same weight as 800,000 Blue Whales



OR

Enough to cover 1,328 football pitches every day



THINGS TO
THINK
ABOUT...



Could you stop using some of the single-use plastic?

Calculate how much plastic waste you throw away in one year.

Can you recycle your plastic waste?
Could your school organise plastic recycling collections?

5. Load Your Results on the Blu Hope Website



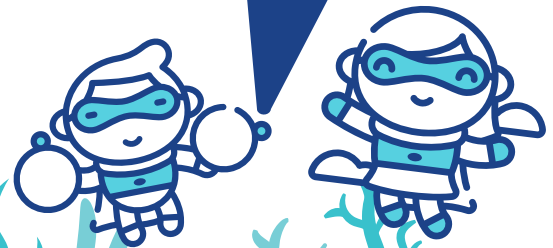
Go to the Blu Hope website: www.bluhope.org and save your week's plastic findings into our online survey.

Ask a parent or teacher to post your plastic waste photograph on social media and include **#BluHope**.

Everyone's plastic waste findings will be added together and shared to help inform future plastic policies.

THANK YOU FOR TAKING PART AND HELPING MAKE A DIFFERENCE.

For more education materials, please visit: www.plasticoceans.uk



REMEMBER...

